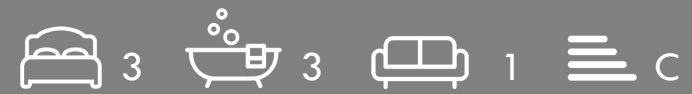


£385,000

Platinum Property
Independent Estate Agents



Oakhurst Crescent, Meir Park, ST3 7XA

01782 392211
sales@platinumpropertymam.co.uk

Oakhurst Crescent, Meir Park, ST3 7XA

****DETACHED BUNGALOW****VERY SPACIOUS & VERSATILE ACCOMMODATION** Welcoming ENTRANCE HALL, LOUNGE, with fireplace housing gas fire, French Doors leading out to the rear patio, DINING KITCHEN, having a comprehensive range fitted range of wall, base & drawer units, Integrated eye level Double Oven, Gas Hob, Extractor over, Integrated Fridge & Dishwasher, space for a table, UTILITY ROOM with fitted base units, sink, two Integrated Freezers, door to the Rear Garden & door into the Garage, WC, THREE DOUBLE BEDROOMS, TWO with EN-SUITE SHOWER ROOMS & BEDROOM ONE also having a DRESSING ROOM. There is a BATHROOM with BATH & SEPARATE DOUBLE SHOWER, INTEGRAL GARAGE, up & over door, power & lighting.

Externally, the property has a BLOCK PAVED DRIVEWAY, providing parking for vehicles and leading to the INTEGRAL GARAGE, there is a lawn, plants & shrubs.

There are full height pedestrian gates to either side of the property.

The REAR GARDEN, offers a HIGH DEGREE OF PRIVACY, is laid to block paved patio, lawn, feature slate chipped areas. plants & shrubs.

Meir Park benefits its own Doctors Surgery, local shop, pub restaurant, children's nursery, fish & chip shop, with B & Q and Supermarkets within close proximity. Transport links, bus routes & highly regarded schools are within easy reach. Grindley Park is a short walk away.

ENTRANCE HALL

24'4"(max) x 16'8"(max) (7.43m(max) x 5.10m(max))

LOUNGE

22'2" x 13'0" (6.77m x 3.98m)

DINING KITCHEN

19'6" x 9'8" (5.96m x 2.96m)

UTILITY ROOM

12'11" x 7'1" (3.95m x 2.17m)

WC

5'5" x 3'2" (1.66m x 0.99m)

BEDROOM ONE

14'3" x 13'3" (4.36m x 4.05m)

DRESSING ROOM

7'9" x 5'6" (2.38m x 1.68m)

EN-SUITE SHOWER ROOM

7'8" x 4'9" (2.36m x 1.46m)

BEDROOM TWO

10'10" x 9'8" (3.31m x 2.96m)

EN-SUITE SHOWER ROOM

9'8" x 3'2" (2.96m x 0.97m)

BEDROOM THREE

13'0" x 9'8" (3.97m x 2.97m)

BATHROOM

10'11" x 6'3" (3.33m x 1.93m)

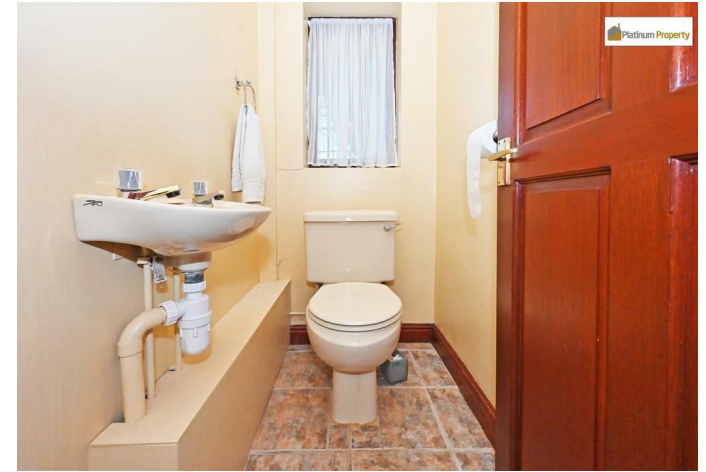
INTEGRAL GARAGE

17'1" x 9'8" (5.23m x 2.96m)

- LARGE DETACHED BUNGALOW
- VERSATILE & SPACIOUS ACCOMMODATION
 - LOUNGE
 - DINING KITCHEN
 - UTILITY ROOM
 - WC
- THREE DOUBLE BEDROOMS, TWO WITH EN-SUITE SHOWER ROOMS
 - MAIN BATHROOM
- DRIVEWAY & INTEGRAL GARAGE
- REAR GARDEN WITH A HIGH DEGREE OF PRIVACY



Platinum Property
Independent Estate Agents



Platinum Property
Independent Estate Agents



Platinum Property
Independent Estate Agents



Platinum Property
Independent Estate Agents



Platinum Property
Independent Estate Agents

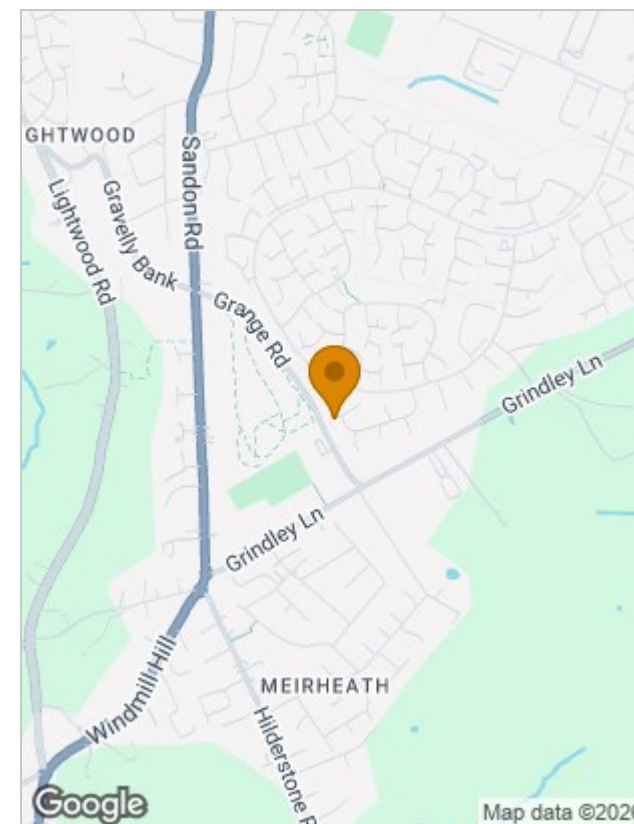
Floor Plans



Ground Floor

All measurements are approximate and for display purposes only

Location Map

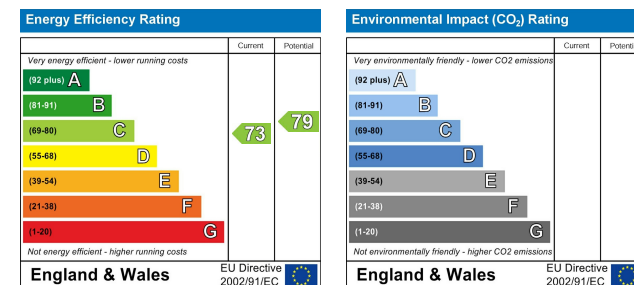


Viewing

Please contact our Stoke-on-Trent Office on 01782 392211 if you wish to arrange a viewing appointment for this property or require further information.

422 Sandon Road, Meir Heath, Stoke-on-Trent, Staffordshire, ST3 7LH
 Tel: 01782 392211 Email: sales@platinumpropertymam.co.uk
 Website: www.platinumpropertymam.co.uk

Energy Performance Graph



The particulars are set out as a general outline only for the guidance of intended purchasers or lessees, and do not constitute, any part of a contract. Nothing in these particulars shall be deemed to be a statement that the property is in good structural condition or otherwise nor that any of the services, appliances, equipment or facilities are in good working order. Purchasers should satisfy themselves of this prior to purchasing.



AGENTS NOTES

TENURE

Freehold. We cannot comment on any other issues relating to the title or any other legal issues that may affect the property unless we have been made aware of any such matters. Purchasers are recommended to satisfy themselves as to the tenure via their solicitor/legal representative.

SALES PARTICULARS, MEASUREMENTS, PHOTOGRAPHS AND FLOOR PLANS

Whilst every care has been taken, we advise that all measurements have been taken as a guide to prospective purchasers only, and whilst we try to ensure accuracy, these are approximate and not deemed precise. We endeavour to ensure that these sales particulars are accurate and reliable; however, we do advise that they do not constitute or form part of an offer or any contract and none is to be relied upon as statements of representation or fact. All photographs (which may have been taken with a nonstandard/wide-angle lens), measurements, floor plans and distances referred to are given as a guide only, to provide an overall impression of the accommodation of the property and should not be relied upon for the purchase of floor coverings, or any other furniture, fixtures or fittings.

FIXTURES & FITTINGS

Nothing written in these sales particulars is intended to indicate that any fixtures or fittings, including floor coverings, curtains/blinds, fittings or furnishings, electrical goods (whether wired or not), gas/electric fires, light fittings, or any other item not mentioned, are included/form part of the property being offered for sale. It is through liaison and agreement between The Seller and The Purchaser that any such agreement be reached.

SERVICES

None of the services, appliances, apparatus or where applicable, central heating systems or specific fittings or integrated appliances have been tested by The Agent. We are unable to comment on their serviceability and no guarantee as to their operating ability or efficiency is given, and no warranty is offered. With regards to any connected mains services, Purchasers are recommended to satisfy themselves of their suitability.

OFFER / PURCHASING PROCEDURE

All offers should be made directly to the selling Agent. This is part of our agreement with The Seller, and should be submitted before contacting a bank, building society or solicitor/legal representative. Any delays whether intentional or not, may result in the property being sold to another person, and survey/legal and other fees may be unnecessarily incurred. We are obliged to check into a purchaser's financial situation to qualify an offer and financial arrangements.

FINANCE

An experienced mortgage/financial adviser with access to a wide range of lenders/mortgages is available to discuss your mortgage requirements. We advise that we may receive referral fees from this recommendation.

YOUR HOME MAY BE REPOSSESSED IF YOU DO NOT KEEP UP THE REPAYMENTS ON YOUR MORTGAGE OR OTHER LOAN SECURED ON IT.

REFERRALS

We can recommend local solicitors/conveyancers. You are not obliged to use these services. We advise that we may receive referral fees from these recommendations.

SURVEYS

We have not carried out a structural survey on the property. If you are considering purchase of a property, it is advised that you do instruct a surveyor.

VIEWING

Strictly by appointment through:-

Platinum Property, 422 Sandon Road, Meir Heath, Stoke-on-Trent, ST3 7LH.

Telephone 01782 39 22 11.

NOTE TO PURCHASERS

No person in this firm's employment has the authority to make or give any representation or warranty in respect of the property.

Lease details, service charges and ground rent (where applicable) and council tax are given as a guide only and should be checked and confirmed by your solicitor prior to exchange of contracts.

The copyright of all details, photographs, virtual tours and floorplans remain the possession of Platinum Property.

You may download, store and use the material for your own personal use and research. You may not republish, retransmit, redistribute or otherwise make the material available to any party or make the same available on any website, online service or bulletin board of your own or of any other party or make the same available in hard copy or in any other media without the website owner's express prior written consent. The website owner's copyright must remain on all reproductions of any material taken from the website.